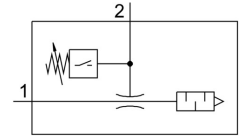
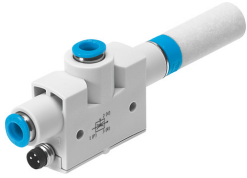


# Vacuum generator VN-07-H-T4-PQ2-VQ2-02-P

Part number: 536801

FESTO



## Data sheet

Feature	Value
Nominal width of Laval nozzle	0.7 mm
Width dimension	16 mm
Type code	VN
Muffler construction type	Open
Mounting position	Any
Ejector characteristics	High vacuum Standard
Integrated function	Pneumatic muffer open Vacuum switch
Structural design	T-shape
Short-circuit protection	Pulsed
Measured variable	Relative pressure
Measuring principle	Piezoresistive
Method of measurement	Relative
Switching element function	N/O contact
Switching function	Threshold value comparator Threshold value with variable hysteresis
Symbol	00991917
Reverse polarity protection	for all electrical connections
Display type	LED
Setting options	Teach-in
Switching status indication	LED
Setting range threshold value	-1 bar ... 0 bar
Operating pressure for max. suction rate	3 bar
Operating pressure	1 bar ... 8 bar
Operating pressure for max. vacuum	4.4 bar
Max. vacuum	92 %
Nominal operating pressure	6 bar
Max. suction rate with respect to atmosphere	16.2 l/min
Switch-off time	≤4 ms
On time	≤4 ms
DC operating voltage range	15 V ... 30 V
Inductive protective circuit	Adapted to MZ, MY and ME coils
Max. output current	100 mA
Residual current	≤0.3 mA
Residual ripple	10 %

Feature	Value
Switching output	PNP
Voltage drop	≤1.5 V
Overload protection	Available
Certification	RCM compliance mark
KC characters	KC EMC
CE marking (see declaration of conformity)	As per EU EMC directive
Operating medium	Compressed air as per ISO 8573-1:2010 [7:4:4]
Information on operating and pilot media	Operation with oil lubrication not possible
Corrosion resistance class (CRC)	1 - Low corrosion stress
Temperature of medium	0 °C ... 60 °C
Cleaning advice	Soap suds
Noise level at nominal operating pressure	66 dB(A)
Degree of protection	IP40
Ambient temperature	0 °C ... 50 °C
Max. tightening torque	0.6 Nm
Pressure measuring range	-1 bar ... 0 bar
Product weight	36 g
Accuracy in ± % FS	1.5 %FS
Long-term drift	±0.5 % FS max.
Temperature coefficient of switching point	0.05 %/K
Electrical connection	3-pin M8
Type of mounting	With through-hole
Pneumatic connection 1	QS-6
Pneumatic connection 3	Pneumatic muffler open
Vacuum connection	QS-6
Seals material	NBR
Female nozzle material	POM
Housing material	POM-reinforced
Fiber-optic cable	PC
Muffler material	PE
Material of plug housing	Brass PA Chrome-plated and nickel-plated
Material of jet nozzle	Wrought aluminum alloy
Material of keypad	POM
Material of pneumatic fitting	Brass Nickel-plated